

Optional accessories

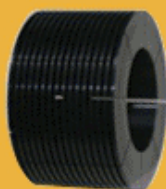
for macro and micro light sources

FS/ULS-02
FMA-04/LS

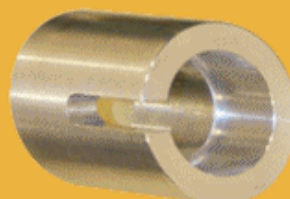
1. Heat Sink



HS-01



HS-02



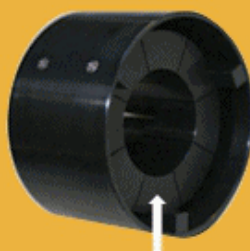
HS-03

Technical data for FMA-04 Fluorescent Attachment light source and LED driver:

2. Heat Sink Cover



HSC-01



HS-02

Powered from electricity network:

84VAC ÷ 260VAC

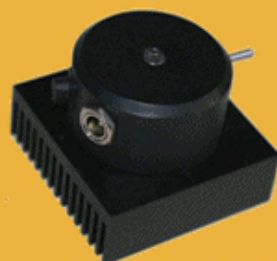
Powered by power supply:

6VDC, 1.5A

Coaxial connector (central pin is positive)

Current consumption depends on the light intensity switch position of the light source selector

3. LED Drivers



FMA-04/LD-01/01

One channel driver



FMA-04/LD-03/01

Three channel driver



BIOLOGICAL LABORATORY EQUIPMENT
MAINTENANCE AND SERVICE LTD.

Újszász u. 47/E, H-1165 Budapest, HUNGARY

Tel.: +36-20-4297735 E-mail: bls@bls-ltd.com Website: www.bls-ltd.com